

ITEM NO: \_\_\_7a\_Supp\_\_\_

DATE OF  
MEETING: December 3, 2013

# Port/City of Burien Interlocal Agreement Northeast Redevelopment Area (NERA)

Port   
of Seattle®

# Outline

- Background
- Proposed Actions
- Future Actions



# NERA Map

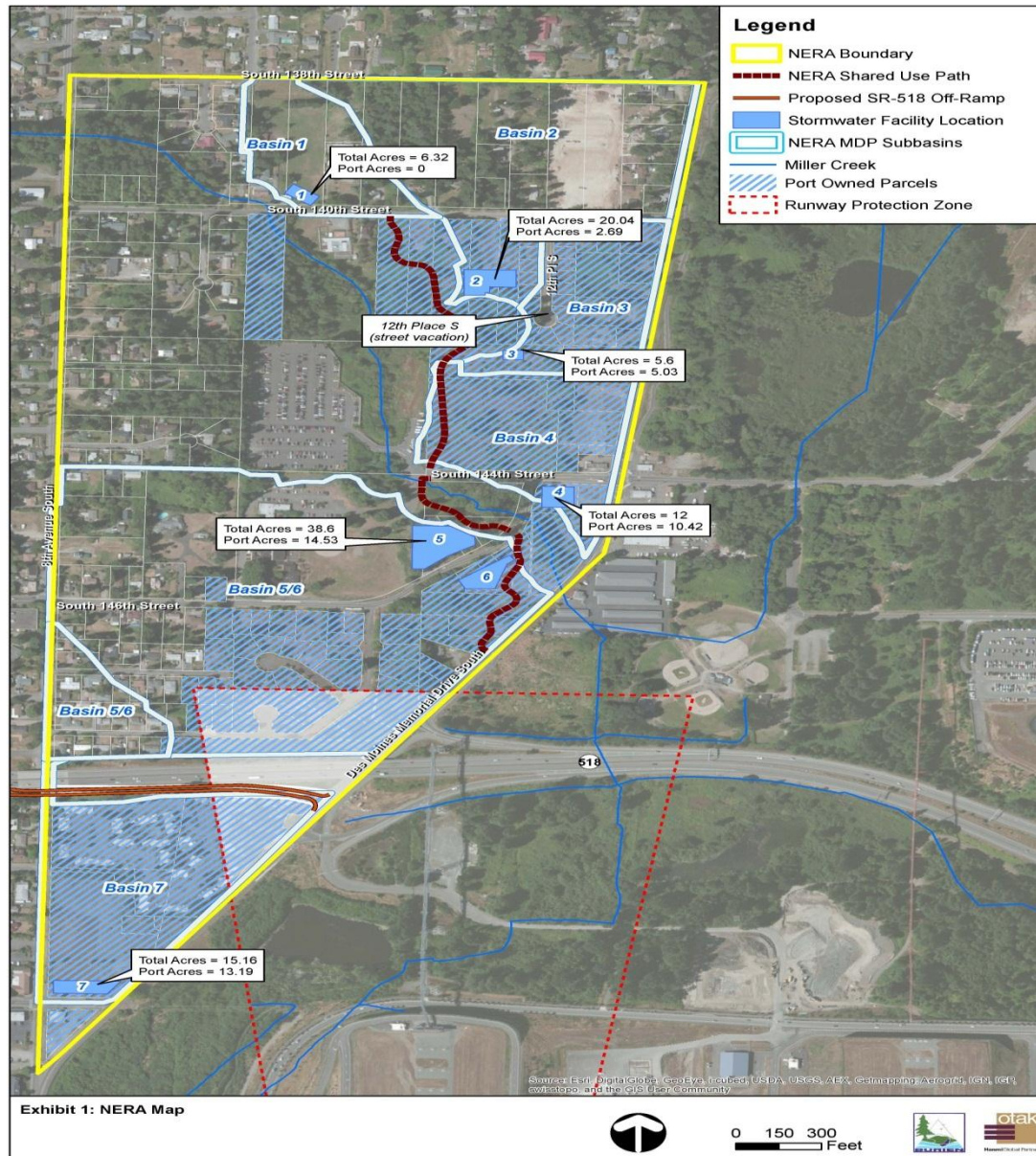


Exhibit 1: NERA Map



0 150 300 Feet



# Background

- NERA Plan
- Regional Stormwater System
- SR 518 Off-Ramp
- Proposed Development
  - Auto Mall
  - Air Cargo Facilities
- FAA Pilot Program



# Proposed Actions

- Stormwater Easements
  - Facility #3 (90% discount)
  - Facility #4 (87% discount)
  - Facility #6 (No cost)
- Port Construction Contribution
  - Facilities #3 and #4
  - \$1.2 million



# Proposed Actions

- Shared Use Path Easement
  - Full fair market value
- Street Vacation
  - 12<sup>th</sup> Place South
- FAA Pilot Program
  - \$500,000 local match



# Future Actions

- SR 518 Interchange @ Des Moines Memorial Drive
  - Eastbound Off-Ramp
    - Approval of right-of-way transfer
  - Eastbound On-Ramp
    - Approval of design and construction funds



# Schedule

ACTIVITY	PROJECTED COMPLETION DATE
Stormwater and Shared Use Path Easements	<ul style="list-style-type: none"> <li>Q1 2014: Closing, including the \$1.2 million stormwater contribution</li> </ul>
Street Vacation	<ul style="list-style-type: none"> <li>Q2 2014: Closing</li> </ul>
SR 518 Off-Ramp	<ul style="list-style-type: none"> <li>Q2 2014: Commission authorization of design and construction funds for replacing existing on-ramp</li> <li>Q4 2014: City completes design of new off-ramp</li> <li>Q4 2014: Commission authorization to convey right-of-way needed for new off-ramp</li> </ul>
FAA Pilot Program Application	<ul style="list-style-type: none"> <li>Q1 2014: Submit completed application</li> <li>Q2 2014: FAA approval</li> <li>Q3 2014: Begin scope of work</li> </ul>
Developer RFP	<ul style="list-style-type: none"> <li>Q4 2013: Issue RFP</li> <li>Q2 2014: Select developer</li> <li>Q4 2014: Commission authorization of proposed ground lease</li> </ul>



# Financial Implications

ILA ITEM	PORT	CITY
SW Facility #3 Easement	--	\$13,889
SW Facility #4 Easement	--	\$14,961
SW Facility #6 Easement	--	-----
Temporary Construction Easement	--	\$8,724
Construction contribution for SW Facilities #3 & #4	\$1,200,000 (Public Expense)	--
Shared Use Path Easement	--	\$69,463
12 <sup>th</sup> Place South Street Vacation	\$245,000 (Capital)	--
FAA Pilot Program Local Match	\$500,000 (Expense)	\$500,000
<b>TOTAL</b>	<b>\$1,945,000</b>	<b>\$607,037</b>